



**REGIONAL SPECIALISED METEOROLOGICAL CENTRE-TROPICAL CYCLONES, NEW DELHI  
TROPICAL WEATHER OUTLOOK**

**DEMS-RSMC SPECIAL TROPICAL CYCLONES NEW DELHI DATED 01.12.2022**

**TROPICAL WEATHER OUTLOOK FOR NORTH INDIAN OCEAN (THE BAY OF BENGAL AND THE ARABIAN SEA) VALID FOR NEXT 120 HOURS ISSUED AT 0600 UTC OF 01.12.2022 BASED ON 0300 UTC OF 01.12.2022.**

**BAY OF BENGAL:**

A CYCLONIC CIRCULATION IS LIKELY TO EMERGE INTO SOUTH ANDAMAN SEA AROUND 4<sup>th</sup> DECEMBER, 2022. UNDER ITS INFLUENCE, A LOW PRESSURE AREA IS LIKELY TO FORM OVER THE SAME AREA AROUND 5<sup>TH</sup> DECEMBER. IT IS LIKELY TO MOVE WEST-NORTHWESTWARDS AND CONCENTRATE INTO A DEPRESSION OVER SOUTHEAST BAY OF BENGAL DURING NEXT 48 HOURS. THEREAFTER, IT IS LIKELY TO CONTINUE TO MOVE WEST-NORTHWESTWARDS AND REACH NEAR TAMILNADU-PUDUCHERRY COAST ON 8<sup>TH</sup> DECEMBER.

SCATTERED LOW AND MEDIUM CLOUDS WITH EMBEDDED INTENSE TO VERY INTENSE CONVECTION LAY OVER SOUTH BAY OF BENGAL AND SOUTH ANDAMAN SEA. SCATTERED LOW AND MEDIUM CLOUDS WITH EMBEDDED MODERATE TO INTENSE CONVECTION LAY OVER NORTH & EASTCENTRAL BAY OF BENGAL AND ISOLATED WEAK TO MODERATE CONVECTION LAY OVER GULF OF MARTABAN.

**PROBABILITY OF CYCLOGENESIS (FORMATION OF DEPRESSION) DURING NEXT 120 HRS:**

24 HOURS	24-48 HOURS	48-72 HOURS	72-96 HOURS	96-120 HOURS
NIL	NIL	NIL	NIL	LOW

**ARABIAN SEA:**

SCATTERED LOW AND MEDIUM CLOUDS WITH EMBEDDED INTENSE TO VERY INTENSE CONVECTION LAY OVER SOUTHWEST ARABIAN SEA AREA. SCATTERED LOW AND MEDIUM CLOUDS WITH EMBEDDED MODERATE TO INTENSE CONVECTION LAY OVER SOUTHEAST ARABIAN SEA & COMORIN AND WEAK TO MODERATE CONVECTION LAY OVER NORTHEAST ADJOINING EASTCENTRAL ARABIAN SEA.

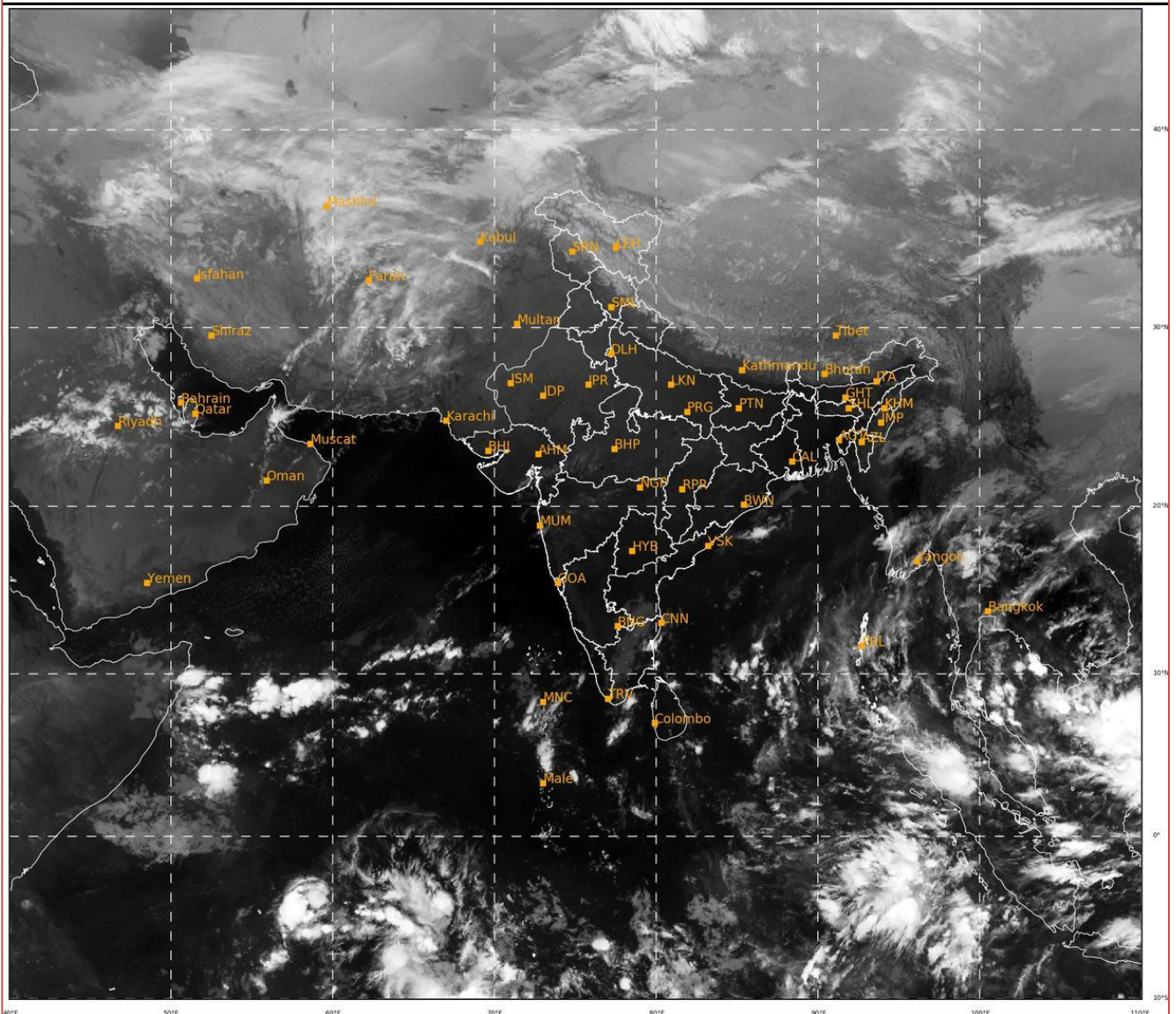
**PROBABILITY OF CYCLOGENESIS (FORMATION OF DEPRESSION) DURING NEXT 120 HRS:**

24 HOURS	24-48 HOURS	48-72 HOURS	72-96 HOURS	96-120 HOURS
NIL	NIL	NIL	NIL	NIL

**Remarks:** NIL

SAT : INSAT-3D IMG  
IMG\_TIR1 10.8 um  
LIC Mercator

01-12-2022/(0300 to 0326) GMT  
01-12-2022/(0830 to 0856) IST



512

936

IMD, DELHI

Cloud distribution: (a) Isolated: <25%, Scattered:25-50%, Broken: 51-75%, Solid:>75%, Convection Intensity: (a) Weak: Cloud Top Temperature (CTT) >-25°C, (b) Moderate: CTT: - 25°C to -40°C, (c) Intense: CTT: - 41°C to -70°C and (d) Very Intense: : Less than -70°C  
PROBABILITY OF CYCLOGENESIS (FORMATION OF DEPRESSION): NIL: 0%, LOW: 1-33%, , MODERATE: 34-66% AND HIGH: 67-100%  
This is a guidance Bulletin for WMO/ESCAP Panel Member countries. Visit respective National websites for Country specific Bulletins